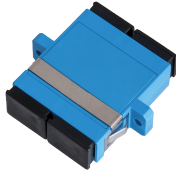


NMF-OA2S2-FN-SCU-SCU-BL-50

Fiber-Optic Adapter, Single-mode 9/125μm, OS2, SC/UPC-SC/UPC, full flange, duplex, blue, 50pcs



Optical fiber adapters are designed for connecting patch cords and cables terminated with the same type of connector. Adapters are installed in removable panels in optical patch panels and provide a reliable connection, as well as stable parameters of detachable connection. The SC adapter is made of plastic of different colors for better visual identification of the adapter type. Blue is used to connect the connectors with UPC polishing, and green ones - with APC polishing. Mounting of SC type adapters to removable panels in optical crossways is carried out using metal latches and screws. Centering bushings are made of ceramic for all optical connecting adapters intended for single-mode fiber. All adapters are equipped with plugs for protection against dirt and dust.

Ordering Table

P/N	Execution	Adapter type / Polishing	Fiber type	Individual package	
				Volume, m3	Weight, kg
NMF-OA2S2-FN-SCU-SCDuplex		SC/UPC - SC/UPC	SM OS2	-	-

NMF-OA2S2-FN-SCU-SCU-BL-50

Fiber-Optic Adapter, Single-mode 9/125μm, OS2, SC/UPC-SC/UPC, full flange, duplex,
blue, 50pcs

Detailed characteristics

Characteristic	Value
Temperature ranges	Laying -40 to +85 ° C. Operation -40 to +85 ° C
Individual packing	Plastic bag
Warranty	1 year
Protection level	Blue
Type of optical fiber	Single Mode 9/125 OS2
Type of adapter	SC
Insertion loss	≤0,2
Return loss	≥50
Polishing	UPC
Execution	Duplex
Corpus material	Plastic
Central bushing material	Ceramics
Number of switching cycles	No less than 1000