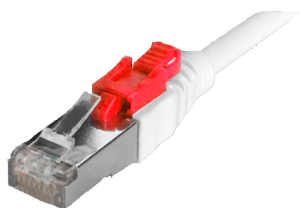


NMC-PC4SA55B-xxx-CS-RD

Patch cord with lock, shielded, category 6A, LSZH, 0.5-10 m, red



Patch cords are used in any cable system and are designed for the connection of communication lines with active network equipment, and for connecting of computers in the workplace to the network device. They provide high connection reliability and allow to quickly change to any connection needs.

To ensure a secure connection and prevent it from being unplugged easily by anonymous user, Lockable Patch Cord serves its purpose.

Lockable Patch Cord (NMC-PC4UD55B-xxx-CS-RD / NMC-PC4UE55B-005-CS-RD / NMC-PC4SA55B-xxx-CS-RD) is a specially designed patch cord which comes with locking mechanism and it can only be unplugged using a designated key (NMC-RJ-KEY-RD).

Besides, sometimes there are ports which may require a plain plug to lock it and prevent from being misused, NMC-RJ-LOCK-RD could certainly help. NMC-RJ-LOCK-RD is a plug which act as a cap for locking unused ports.

The patch cord mentioned above are 100% tested with Fluke DSX during production. This ensures both performance and full compliance with the most stringent requirements of large reserves of transmission characteristics and reliable performance throughout the life cycle.

Ordering Table

P/N	Type	Cat.	Length, m	Individual package		Collective package			Freight package		
				Volume, m3	Weight, kg	Quantity	Volume, m3	Weight, kg	Quantity	Dimensions, mm	Weight, kg
NMC-PC4SAS/FTP		6A	0.5	0.000190	0.043	10 pcs.	0.002533	0.43	90 pcs.	356x250x24	3.91
NMC-PC4SAS/FTP		6A	1.0	0.000180	0.058	10 pcs.	0.003376	0.59	70 pcs.	356x250x24	4.45
NMC-PC4SAS/FTP		6A	1.5	0.000342	0.074	10 pcs.	0.003376	0.67	60 pcs.	356x250x24	4.17
NMC-PC4SAS/FTP		6A	2.0	0.000180	0.102	10 pcs.	0.004224	1.02	50 pcs.	356x250x24	5.15
NMC-PC4SAS/FTP		6A	3.0	0.000380	0.148	10 pcs.	0.005064	1.48	30 pcs.	356x250x24	5.15
NMC-PC4SAS/FTP		6A	5.0	0.000368	0.230	10 pcs.	0.005488	2.30	25 pcs.	356x250x24	5.64
NMC-PC4SAS/FTP		6A	7.5	0.000406	0.326	5 pcs.	0.006079	-	12 pcs.	356x250x24	-
NMC-PC4SAS/FTP		6A	10.0	0.000444	0.422	5 pcs.	0.006670	-	12 pcs.	356x250x24	5.39
NMC-RJ-LOCK-RD	Plug	-	-	0.000004	0.010	-	-	-	-	-	-
NMC-RJ-KEY-RD	Key	-	-	0.000001	0.010	-	-	-	-	-	-
NMC-RJ-KEY-RD	Key with keychain	-	-	-	-	-	-	-	-	-	-

NMC-PC4SA55B-xxx-CS-RD

Patch cord with lock, shielded, category 6A, LSZH, 0.5-10 m, red

Detailed characteristics

Characteristic	Value
Category	6A
Bandwidth, MHz	500
Number of pairs	4
Type of conductors	Stranded
Diameter of conductors, AWG	24 (7 x 0.205 ± 0.01 mm)
Insulation material	Polyethylene (PE)
Outer jacket material	LSZH
Outer jacket diameter, mm	6.2 ± 0.3
Jacket color	Red
Compliance	Exceeds the requirements of standards: GOST R 54429, ISO / IEC 11801, EN 50173 and TIA / EIA-568
Supported applications	10BASE-T, 100BASE-TX, 100BASE-T4, 1000BASE-T, ATM-25, ATM-51, ATM-155, 100VG-AnyLan, TR-4, TR-16 Active, TR-16 Passive
Warranty	1 year
Connector type	2xRJ45 / 8P8C
Contact plating	Gold (50 µinch)
Protective cap	Cap with locking mechanism
Cable type	S/FTP
Wiremap	T568B for both side
Temperature range	Storage from -20 to +60 °C. Installation from 0 to +50 ° C. Operation from -20 to +60 °C
Individual package	Plastic bag