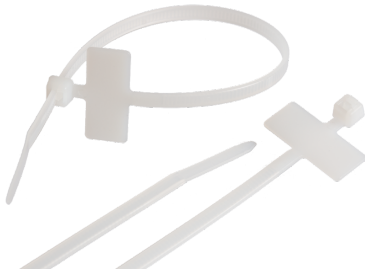


## NMC-CTNxxx-yy-MK-WT-100

Nylon cable ties - non-opening with marking area, white



Ties are used when laying and installing communication cables and electrical equipment. It is the main way of fixing the cable to trays, brackets and other suitable equipment, provides high strength and reliability of fixation. Ties made of nylon and are designed for installation and operation in the room. One-way locking mechanism, one-piece. A feature of this type of screed is a marker pad (label) that allows you to put additional information that facilitates the identification of cable bundles and their continued use throughout the entire life cycle.

### Ordering Table

P/N	Length, mm	Width, mm	Color	Pack quantity	Volume with packaging, m3	Weight with packaging, kg
NMC-CTN100-25-MK-100		2.5	White	100 pieces.	0.000090	0.050
NMC-CTN200-35-MK-200		3.5	White	100 pieces.	0.000220	0.120

## Detailed characteristics

Characteristic	Value
Type	Non-opening with marking area
Temperature ranges	Storage from -40 to +80 °C. Installation from 0 to +80. Operation from 0 to +80 °C
Warranty	1 year
Protection level	White
Materials	Nylon PA66
Length	100 mm / 200 mm
Width	2.5 mm / 3.5 mm