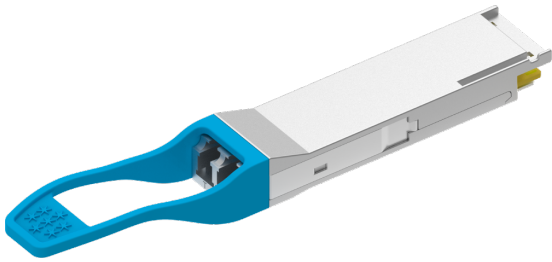


GL-OT-SQ100LC2-LR4

100Gbps QSFP28 LR4 10km DDM Transceiver



100G QSFP28 LR4 optical Transceiver integrates receiver and transmitter path on one module. In the transmit side, four lanes of serial data streams are recovered, retimed, and passed to four laser drivers. The laser drivers control 4-Distributed Feedback Laser (DFB) with center wavelength of 1296 nm, 1300nm, 1305nm and 1309 nm.

The optical signals are multiplexed to a single-mode fiber through an industry standard LC connector. In the receive side, the four lanes of optical data streams are optically demultiplexed by the integrated optical demultiplexer.

Each data stream is recovered by a PIN photo-detector and trans-impedance amplifier, retimed. This module features a hot-pluggable electrical interface, low power consumption and MDIO management interface.

Detailed characteristics

Characteristic	Value
Power, V	3.3
Temperature, °C	Operation from 0 to +85
Product dimensions (WxDxH), mm	18,3x8,4x78,6
Warranty	3 years
Form factor	QSFP+
Connector type	2*LC
Emitter type	4 CWDM DFB lasers
Fiber type	SM (9/125 μm)
Operating wavelength, nm	TxRx:1271,1291,1311,1331
Optical budget, dB	11,4
Data transmission distance, km	10
Data transfer rate, Gbit/s	100